

# Pressure-limiting valve with EC type examination type VDB (size 8 and 10)

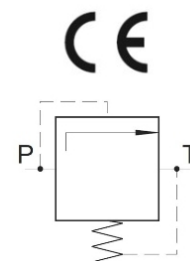


operating pressure  $p_{max}$

350 bar

volume flow  $V_{max}$

120 lpm



## Product characteristics

### Features and advantages

- Valve for limitation of system pressure
- Screw-in cartridge, directly operated
- Pressure limitation set up in factory and valve lead sealed
- Type examination certificate according to 2014/68/EU (pressure equipment directive)
- Approved as safety valve category IV (module B and D) according 2014/68/EU (pressure equipment directive)
- TÜV-component identification TÜV.SV.20-648.5.F.G.p (VDBE08), TÜV.SV.20-649.8.F.G.p (VDBE10)
- CE mark
- Suitable for pressure holding function
- Option with hand wheel allows ventilation, so that the safety valve can be checked for proper function

## Table of Contents

<b>Technical data</b> .....	<b>2</b>
<b>Characteristic lines</b> .....	<b>3</b>
<b>Dimensions and connections</b> .....	<b>4</b>
<b>Order information</b> .....	<b>6</b>
<b>Contact details</b> .....	<b>7</b>

## Technical data

### General

Weight	BE08: 0.4 kg
	BE10: 0.7 kg
Ambient temperature	-20 to +50°C
Installation position	any

### Hydraulic parameters

Hydraulic fluid: mineral oil according to DIN 51524, other media on request

Pressure setting range: see characteristic lines and order information

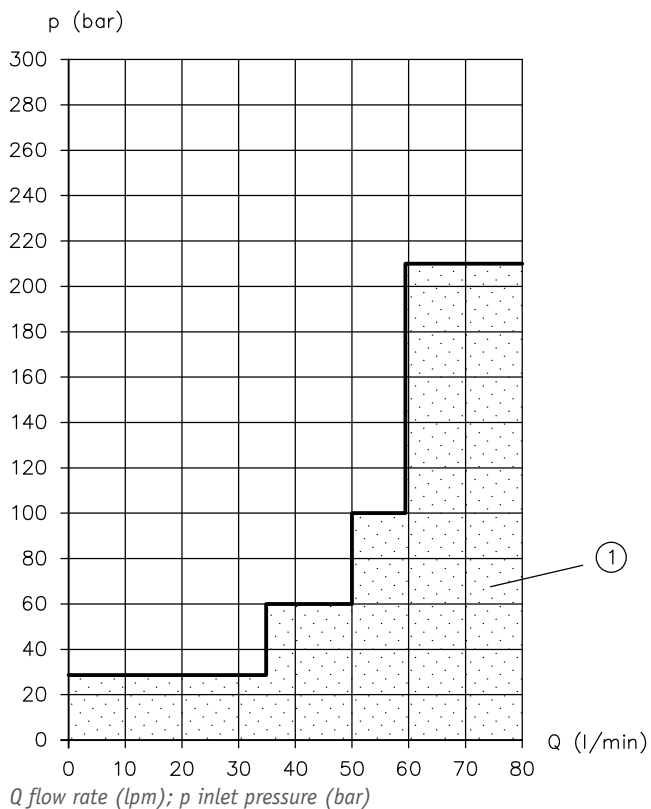
Response pressure	BE08: 30-350 bar
	BE10: 40-350 bar
Max. operating pressure	1.1x response pressure
Max. counter-pressure (tank pressure)	15% of the response pressure
Max. flow rate	BE08: 80 lpm
	BE10: 120 lpm
Hydraulic fluid temperature	-20 to +80°C
Viscosity	10-250 mm <sup>2</sup> /s
Permissible degree of contamination	max. class 20/18/15 according to ISO 4406
Filter recommendation	Filter retention rate $\beta_{25} > 75$

## Characteristic lines

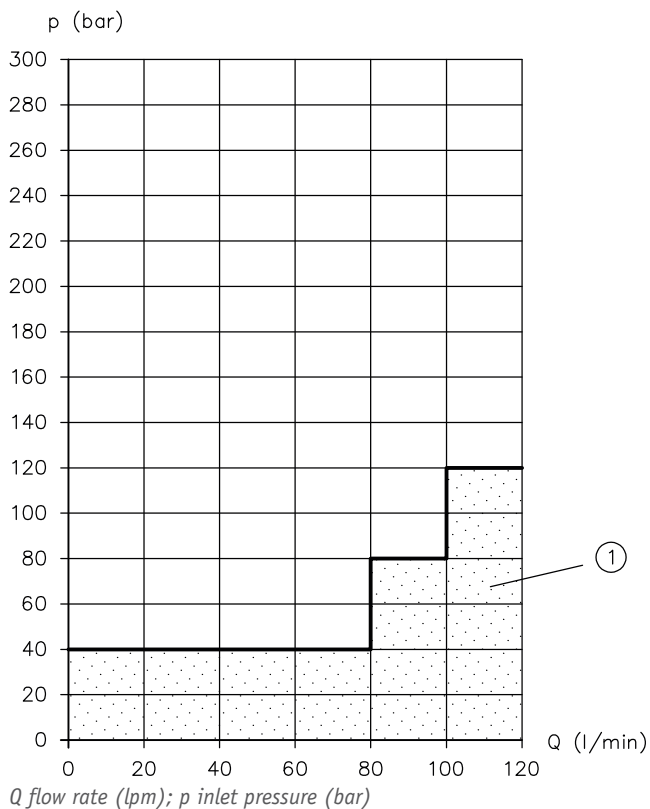
Measured at hydraulic fluid temperature of 50°C, viscosity 35 mm<sup>2</sup>/s, tolerance ±5%

### Application limit

#### VDBE08



#### VDBE10



1 **CAUTION:** Valves must not be used in this area.





## Order information

### Type code

VDBE 08 E 210

opening pressure [bar]

VDBE08	VDBE10
030	040
060	270
070	330*
100 *	350
120*	
180	
200*	
210*	
250*	
280	
315	
330*	
350	

\*available for option EH  
further pressures on request

adjustment possibility

E: response pressure fixed  
and sealed

EH: with handwheel, response  
pressure fixed and sealed,  
ventilation possible

size

08

10

see dimensions

## Contact details

### Headquarters

HAWE Hydraulik SE  
Einsteinring 17  
85605 Aschheim  
Germany

Email: [info@hawe.de](mailto:info@hawe.de)  
[www.hawe.com](http://www.hawe.com)

Phone: +49 (0) 89 / 37 91 00 - 1000

### Contact to the Customer Service

Phone (Head office) + 49 (0) 89 / 37 91 00 - 1000

Phone (Spare parts) + 49 (0) 89 / 37 91 00 - 1302

Phone (Customer Service) + 49 (0) 89 / 37 91 00 - 1491

Fax (Customer Service) + 49 (0) 89 / 37 91 00 - 91491

e-mail [spareparts@hawe.de](mailto:spareparts@hawe.de)  
[service@hawe.de](mailto:service@hawe.de)