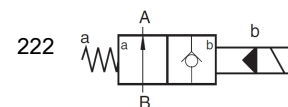


## 2/2-way poppet valve SVN222BE08WD S1113

250 bar



30 L/min



### Product characteristics

- The leakproof hydraulically pilot operated 2/2-way poppet valve offers a high operational reliability even after long periods under high pressure.
- simple design
- suitable for ambient temperatures up to +75 °C
- coil wound without junctions
- optionally with or without manual override

### Table of Contents

Technical data.....	1
Characteristic lines .....	2
Dimensions and connections .....	3
Order information .....	4

## Technical data

### General

weight [kg]	ambient temperature [°C]	mounting position
0.4	-30 to +75	arbitrary

### Hydraulic characteristics

Hydraulic fluid: mineral oil according to DIN 51524, other media on request

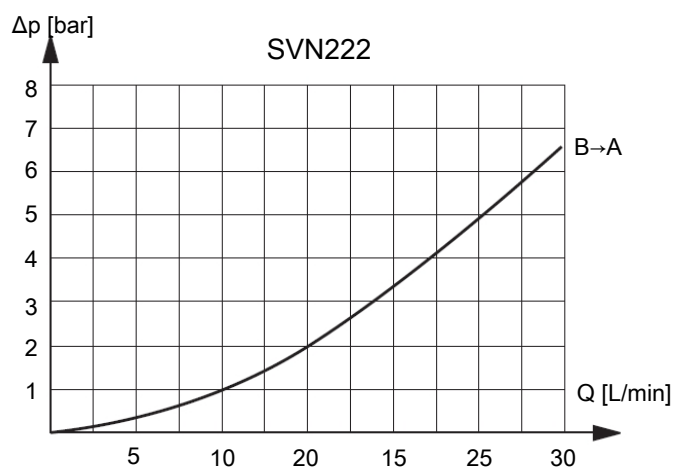
operating pressure (maximal) [bar]	hydraulic fluid temperature [°C]	viscosity [mm <sup>2</sup> /s]	permissible degree of pollution	filter
250	-25 to +75	10-600	max. 22/19/16 according ISO4406	filter retention rate $\beta_{25} > 75$

## Actuation

actuation	voltage	power consumption	duty cycle	protection class according DIN40050
electromagnetic with / without manual override	AC $\pm 10\%$ with rectifier socket	18 W; $P_{20}$ (=power at 20 °C)	continuous operation	IP65 with plug

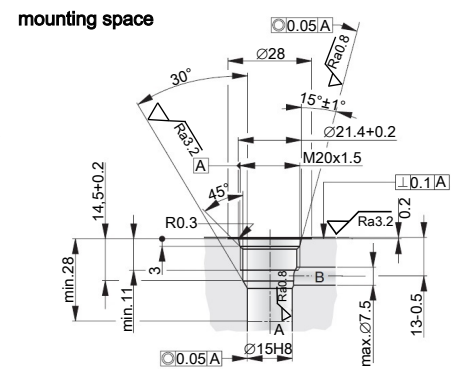
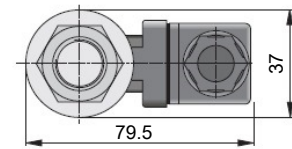
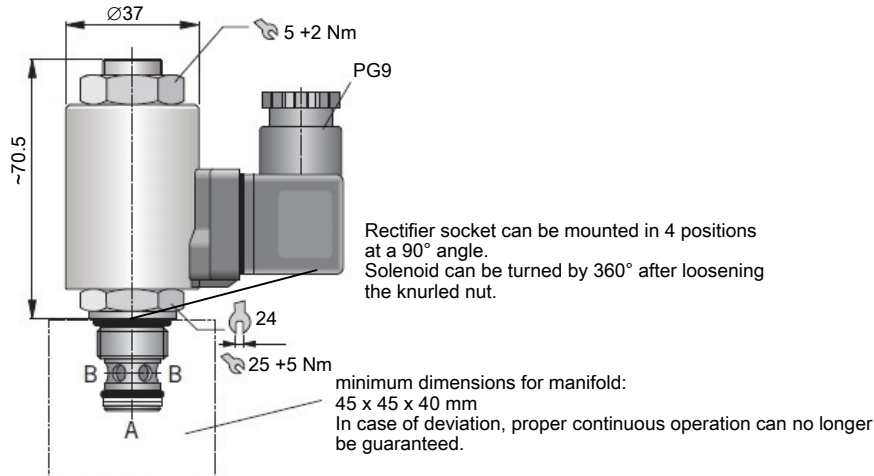
## Characteristic lines

measured at +50 °C temperature of hydraulic fluid, viscosity 35 mm<sup>2</sup>/s, tolerance  $\pm 5\%$

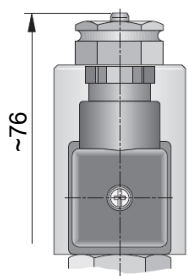


## Dimensions and connections

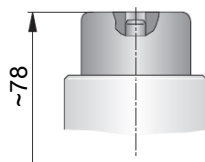
Dimensions are given in mm.



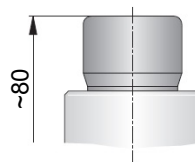
## Manual override



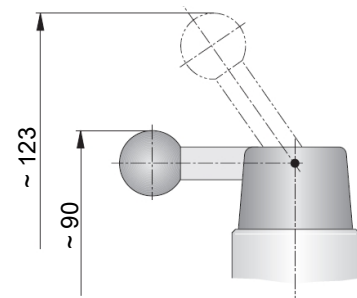
H



HE 31390



HE 31391



HE 30357

## Order information

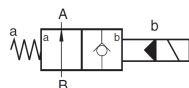
### Type code

ordering example

SVN	222	BE08	W	D	H	S1113	A1
-----	-----	------	---	---	---	-------	----

**type**

222



**serial identification**

see basic information (catalogue)

**electrical data**

W 230 V 50/60Hz ~ (AC)  
with rectifier socket

**special design**

S1113 special number for high temperature  
design and coil wound without junctions

**manual override**

basic version

H possible operating types for  
manual override:

**HE31390\*** manual override pin countersunk

**HE31391\*** push button

**HE30357\*** lever

\* not included in delivery