

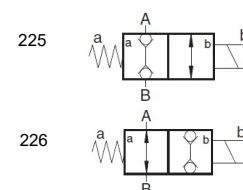
2/2-way directional seated valve type SVN 225, 226 (size 8)

operating pressure p_{\max}

250 bar

volume flow V_{\max}

20 L/min



Product characteristics

- The leakproof hydraulically pilot operated 2/2-way poppet valve offers a high operational reliability even after long periods under high pressure.
- simple design
- optionally with or without manual override

Table of Contents

Technical data.....	2
Characteristic lines.....	3
Dimensions and connections.....	4
Order information.....	5
Contact details.....	6

Technical data

General

weight	0.4 kg
ambient temperature	-30 to +50 °C
mounting position	arbitrary
type	poppet valve, directly controlled

Hydraulic parameters

Hydraulic fluid: mineral oil according to DIN 51524, other media on request

max. operating pressure	250 bar
hydraulic fluid temperature	-25 to +70 °C
viscosity	10-600 mm ² /s
permissible degree of pollution	max. class 22/19/16 according ISO 4406
filter recommendation	filter retention rate $\beta_{25} > 75$

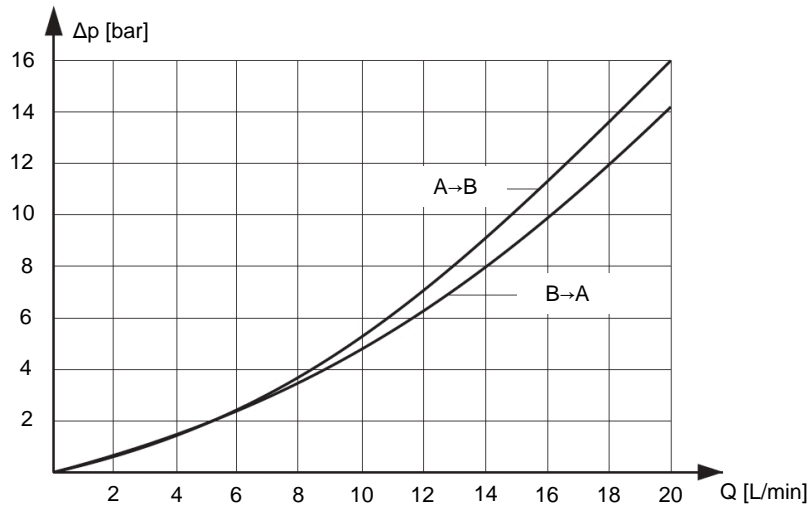
Electrical parameters

actuation	electromagnetic with / without manual override
voltage	AC +5 %, -10 % with rectifier socket DC ± 10 %
power consumption	26 W; P ₂₀ (=power at 20 °C)
duty cycle	continuous operation
protection class according DIN 40050	IP65 with plug

Characteristic lines

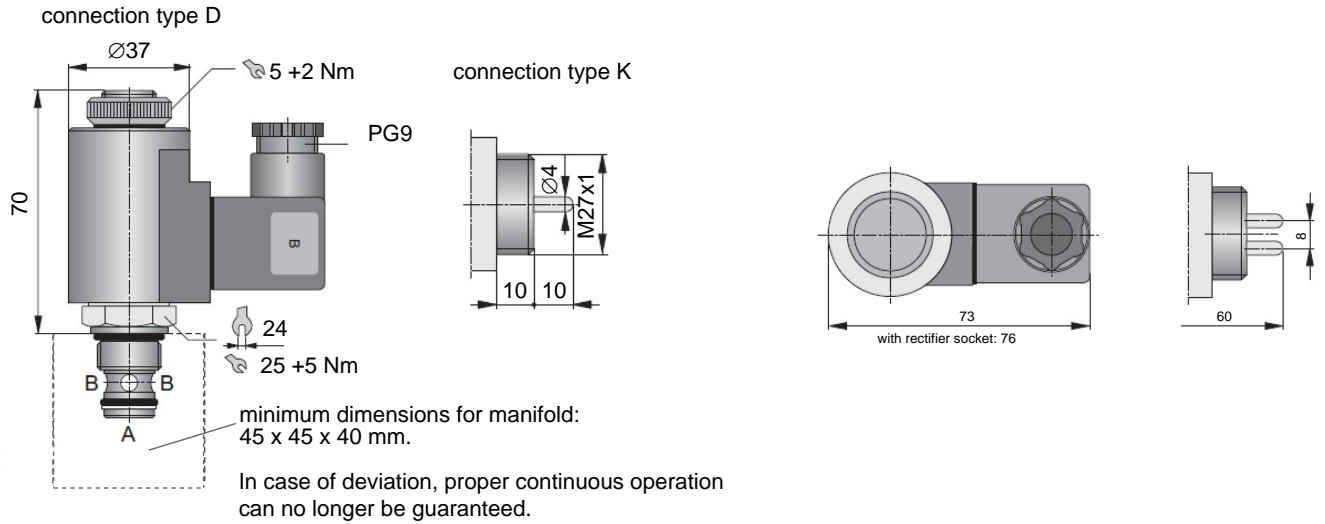
measured at +50 °C temperature of hydraulic fluid, viscosity 35 mm²/s, tolerance ±5 %

SVN225 /226

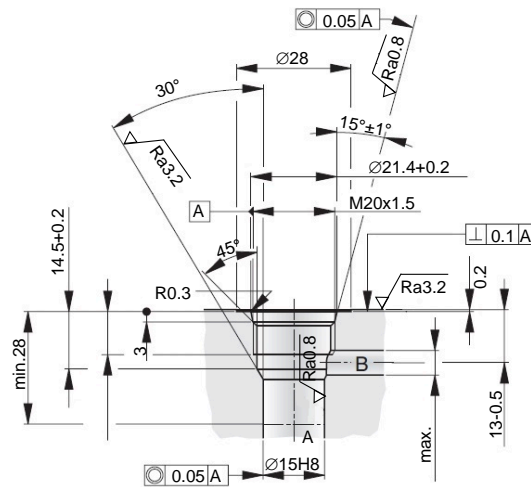


Dimensions and connections

Dimensions are given in mm.

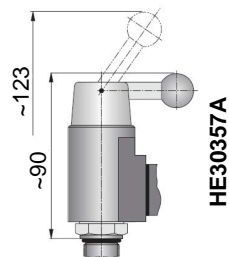


mounting space



Manual override

SVN225 only



Order information

Type code

SVN 225 BE08 N D H*

manual emergency override

— basic version

H* manual emergency override

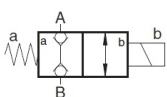
* SVN225 only

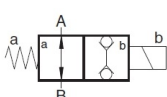
connection type D plug connection according DIN43650-AF2-PG9
K with connection for Kostal plug

electrical data N 12 V = (DC)
P 24 V = (DC)
V* 115 V 50/60 Hz ~ (AC)
W* 230 V 50/60 Hz ~ (AC)
* connection type D only

size

type

225  power consumption 26 W

226  power consumption 26 W

Contact details

Headquarters

HAWE Hydraulik SE
Einsteinring 17
85605 Aschheim
Germany

e-mail: info@hawe.de
www.hawe.com

Telefon: +49 (0) 89 / 37 91 00 - 1000

Contact to the Customer Service

Phone (Head office)	+ 49 (0) 89 / 37 91 00 - 1000
Phone (Spare parts service)	+ 49 (0) 89 / 37 91 00 - 1302
Phone (Customer Service)	+ 49 (0) 89 / 37 91 00 - 1491
Fax (Customer Service)	+ 49 (0) 89 / 37 91 00 - 91491
e-Mail	spareparts@hawe.de service@hawe.de