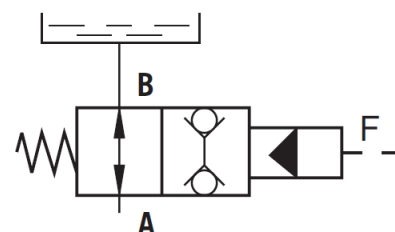


Anti-cavitation valve type NSV

operating pressure p_{max}

320 bar



Product characteristics

Anti-cavitation valves are used for filling and emptying the press cylinders of press brakes during opening and closing in rapid traverse mode. The HAWE anti-cavitation valves which are open in basic position are characterized by a high filling ratio. Control pressure is only required for closing the valves. The anti-cavitation valves are available for installation within the cylinder or for mounting on the cylinder.

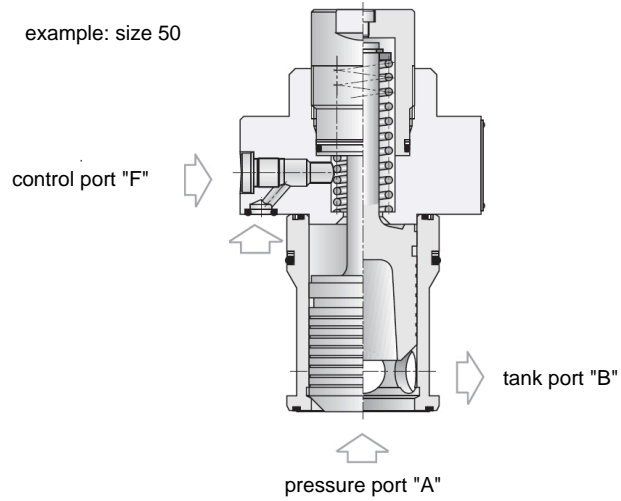
Table of Contents

Structure	2
Technical data	3
Characteristic lines	4
Dimensions and connections	6
Order information	14
Contact details.....	14

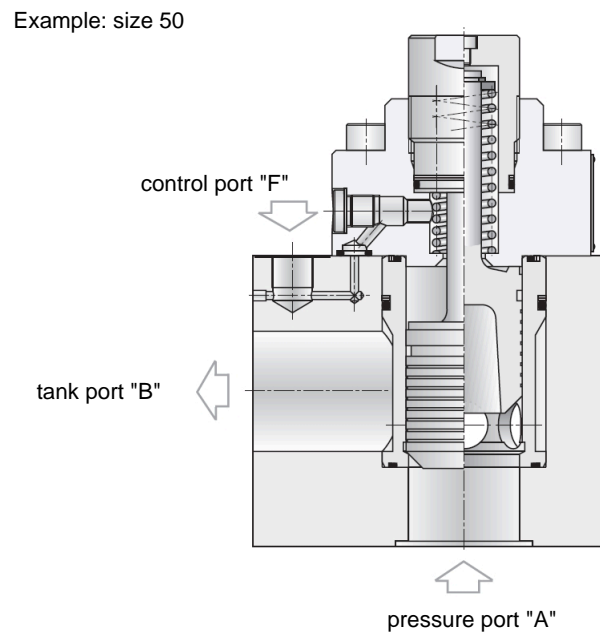
Structure

Basic design of an anti-cavitation valve

NSV_BE



NSV_BA



Technical data

General

type	seated valve		
design	plug-in valve manifold mounting valve		
weight	size	BE	BA
	NG32	1.1 kg	2.5 kg
	NG50	3.7 kg	7.4 kg
	NG75	13.6 kg	22.6 kg
	NG100	22.2 kg	61.3 kg
ambient temperature	-30 to +50 °C		
mounting position	arbitrary		

Hydraulic parameters

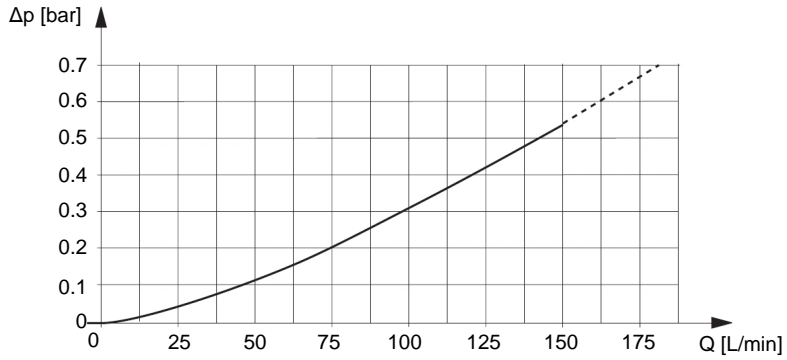
Hydraulic fluid: mineral oil according to DIN 51524, other media on request

max. operating pressure	320 bar
volume flow	see characteristic lines
temperature hydraulic fluid	-25 to +70 °C
viscosity	2.5-380 mm ² /s
permissible degree of pollution	max. class 22/19/16 according ISO 4406
filter recommendation	filter retention rate $\beta_{25} > 75$

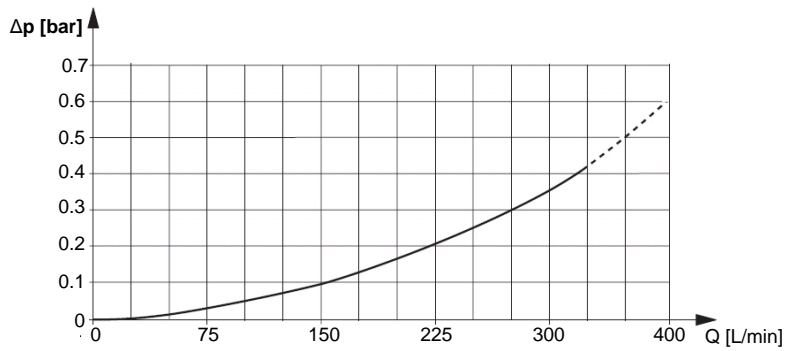
Characteristic lines

measured at +30 °C temperature of hydraulic fluid, 75 mm²/s viscosity, ±5 % tolerance

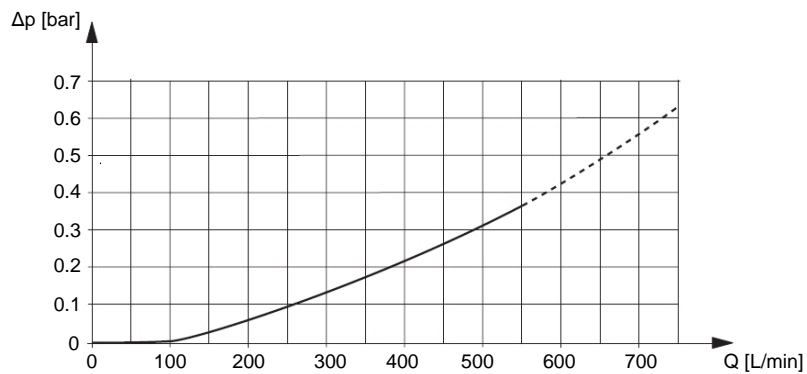
NG32 - In-cylinder application



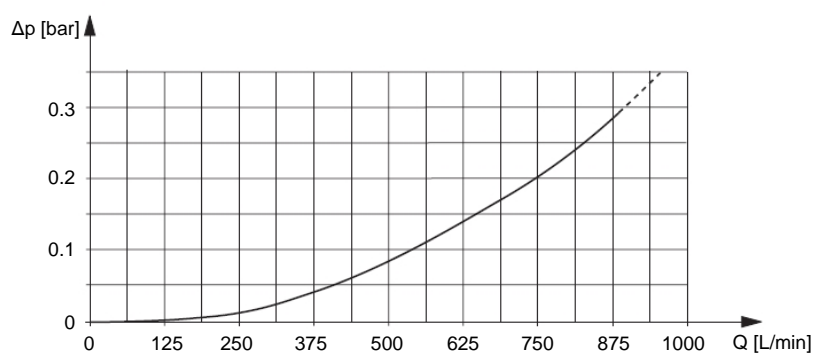
NG50 - On-cylinder application



NG75 - On-cylinder application



NG100 - On-cylinder application



Application limits in press brakes

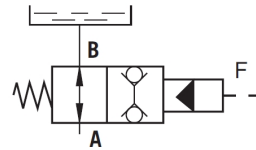
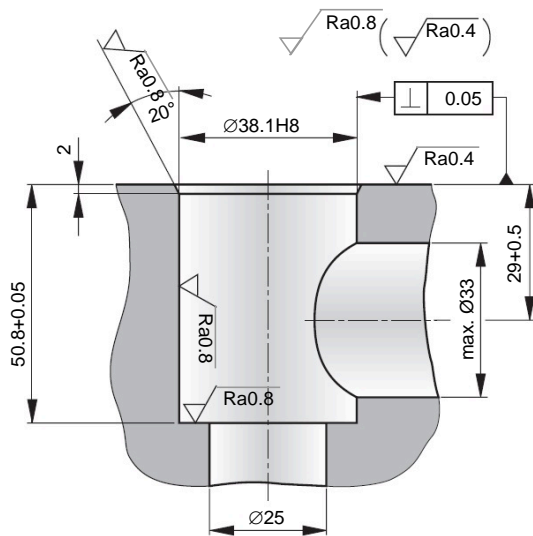
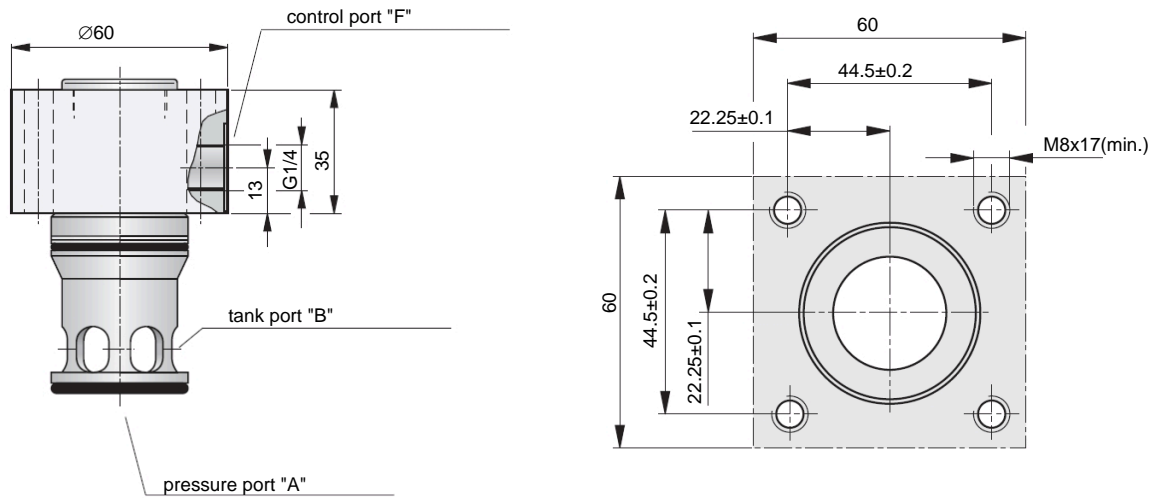
Depending on mounting conditions, tube length, viscosity of the hydraulic fluid, and suction height, the following application limits are given for use of the anti-cavitation valves in press brakes:

NG32	up to 150 L/min
NG50	up to 300 L/min
NG75	up to 500 L/min
NG100	up to 900 L/min

Dimensions and connections

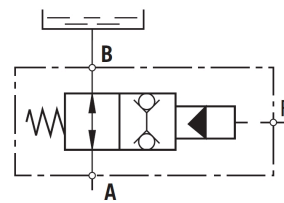
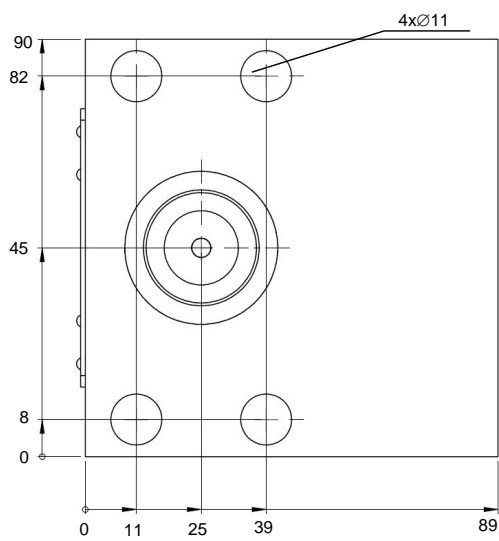
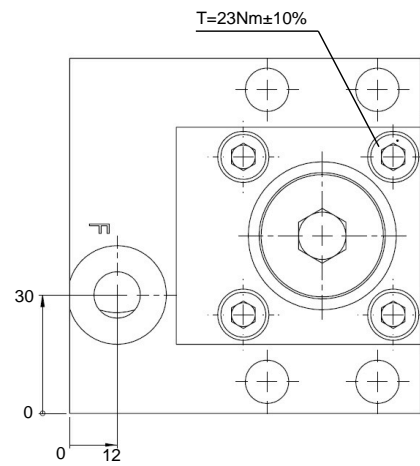
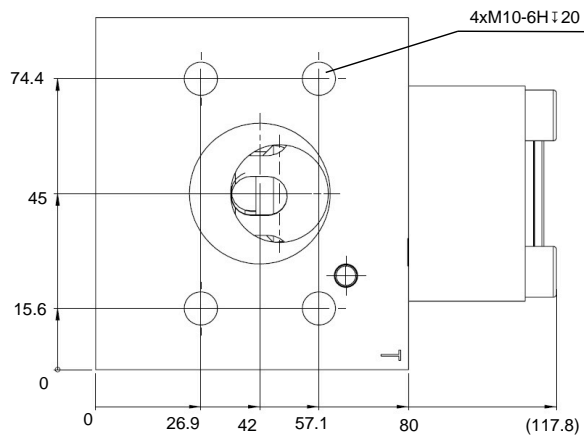
Dimensions are given in mm.

NG32 - In-cylinder application



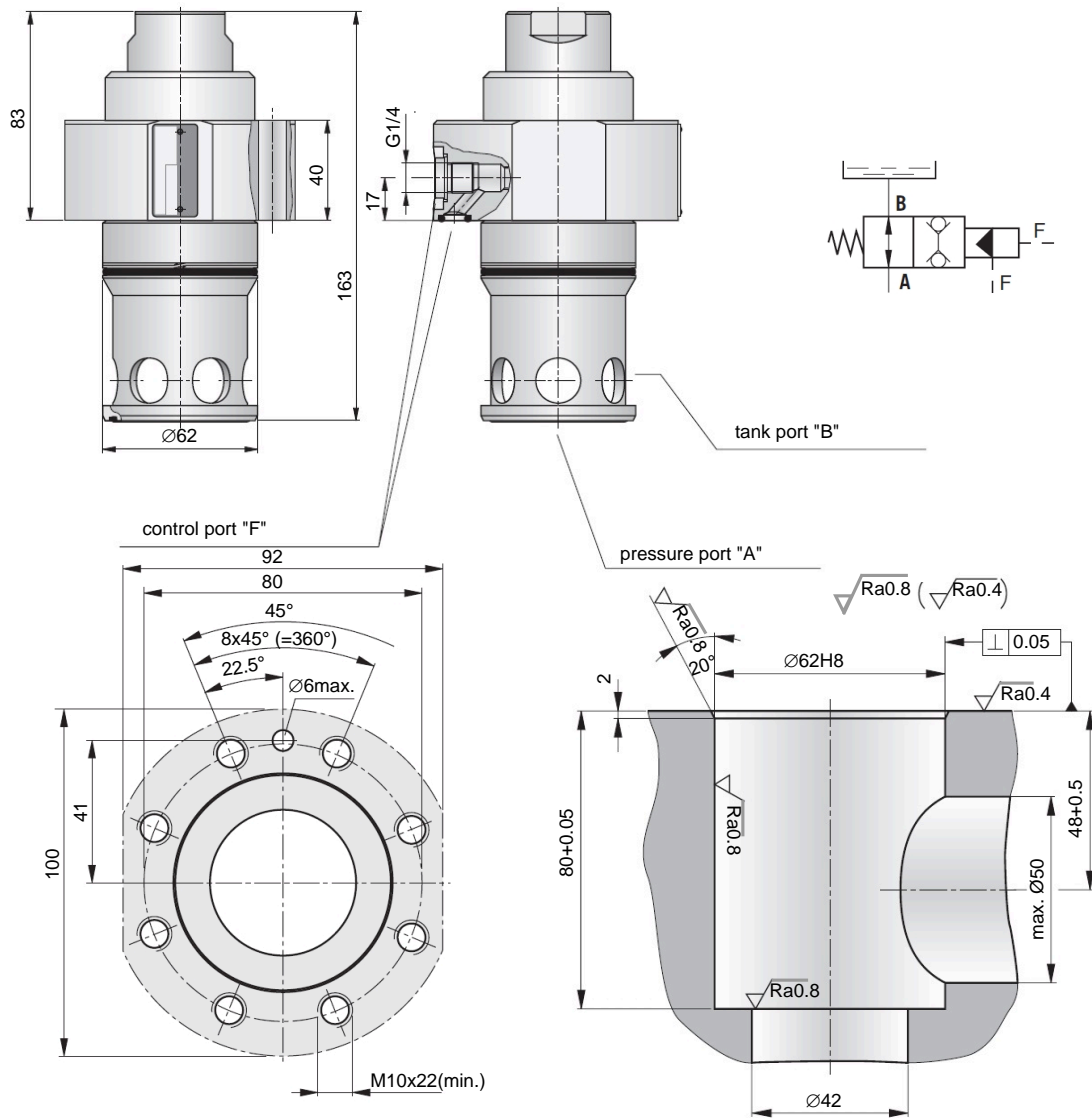
Minimum screw length for fixing: 50 mm.
Recommended are screws of property class 10.9 (34⁺²Nm),
others on request.

NG32 - On-cylinder application



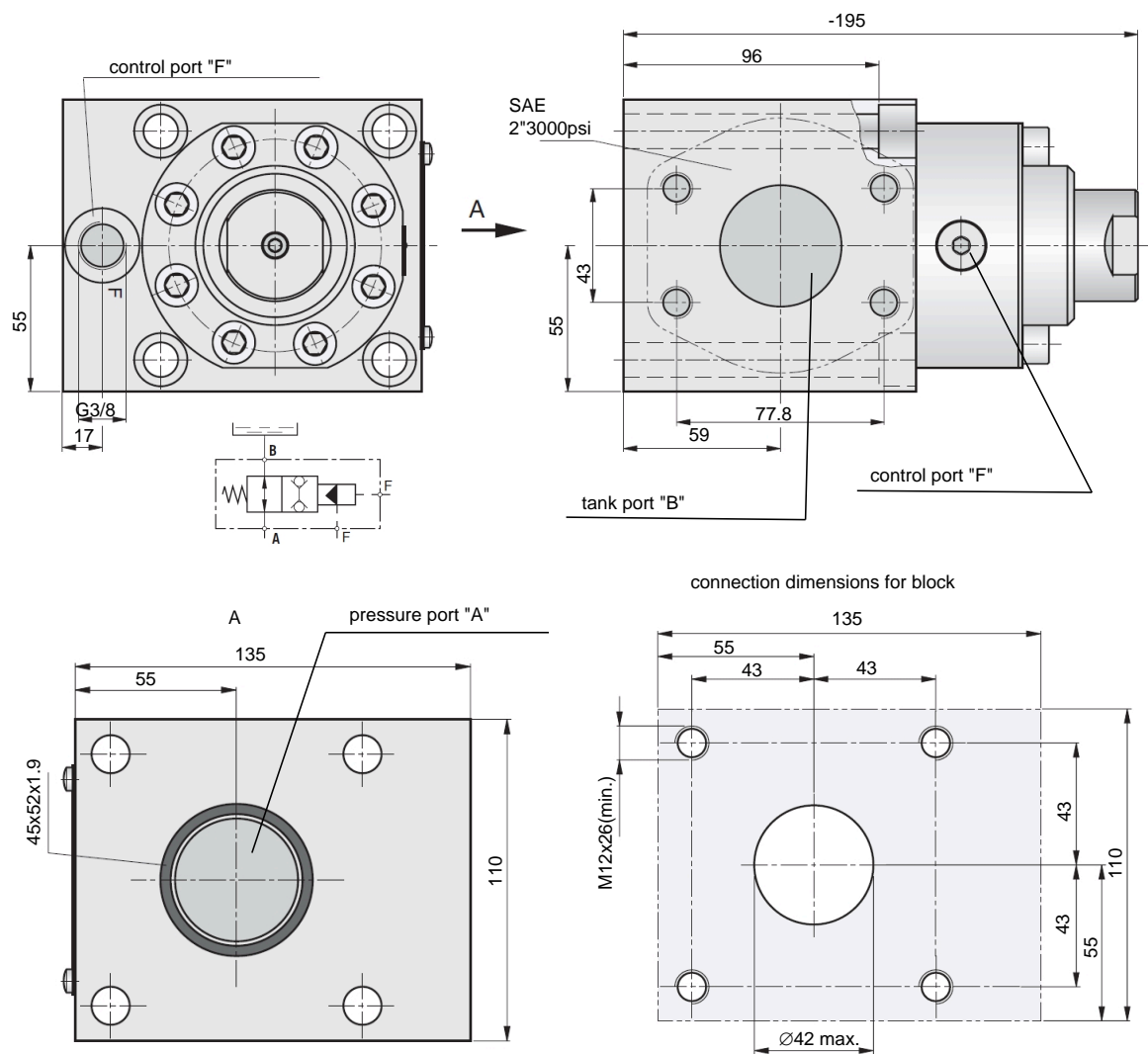
Minimum screw length for fixing: 100 mm.
Recommended are screws of property class 10.9 (68+2Nm),
others on request.

NG50 - In-cylinder application



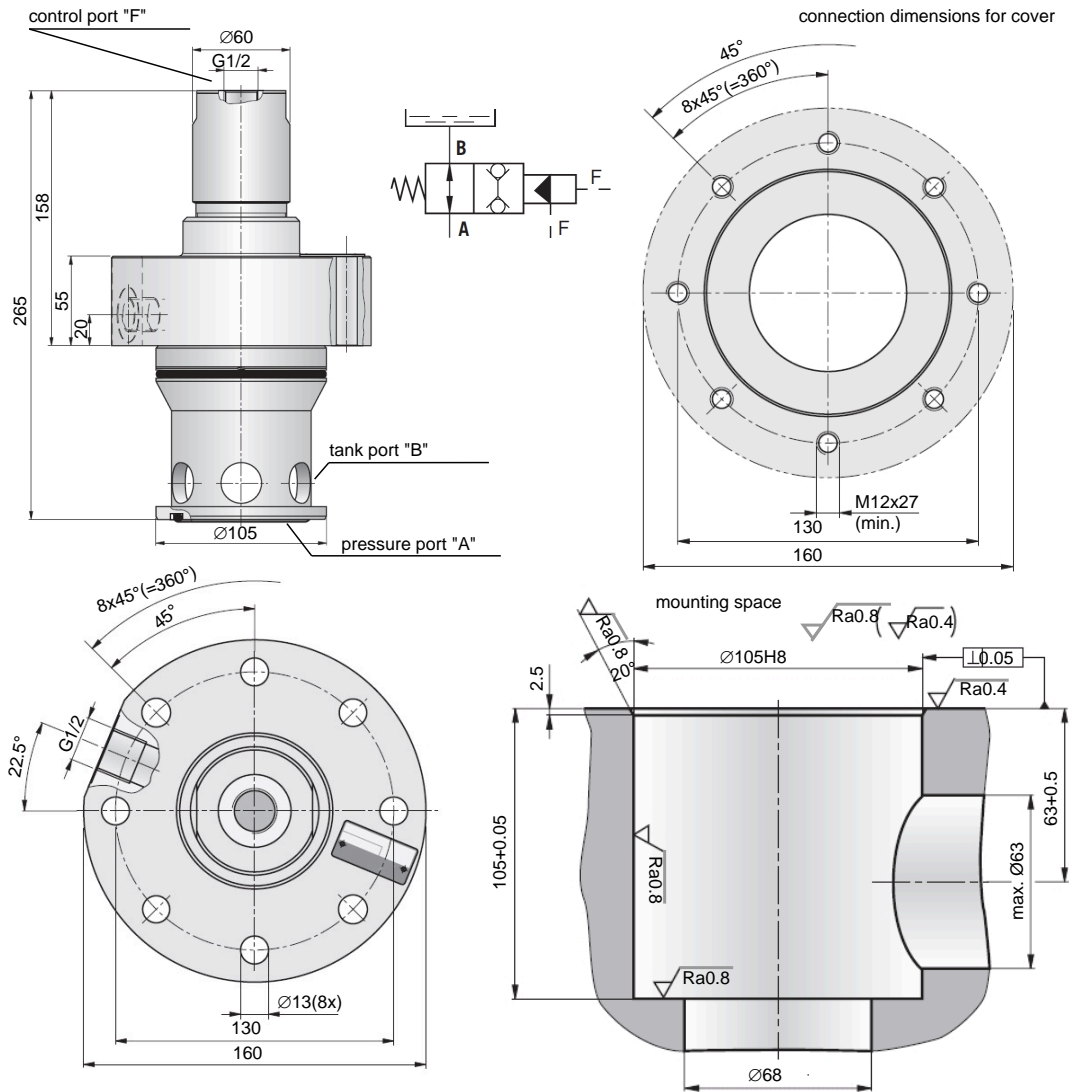
Minimum screw length for fixing: 60 mm. Recommended are screws of property class 10.9 (68⁺²Nm), others on request.

NG50 - On-cylinder application



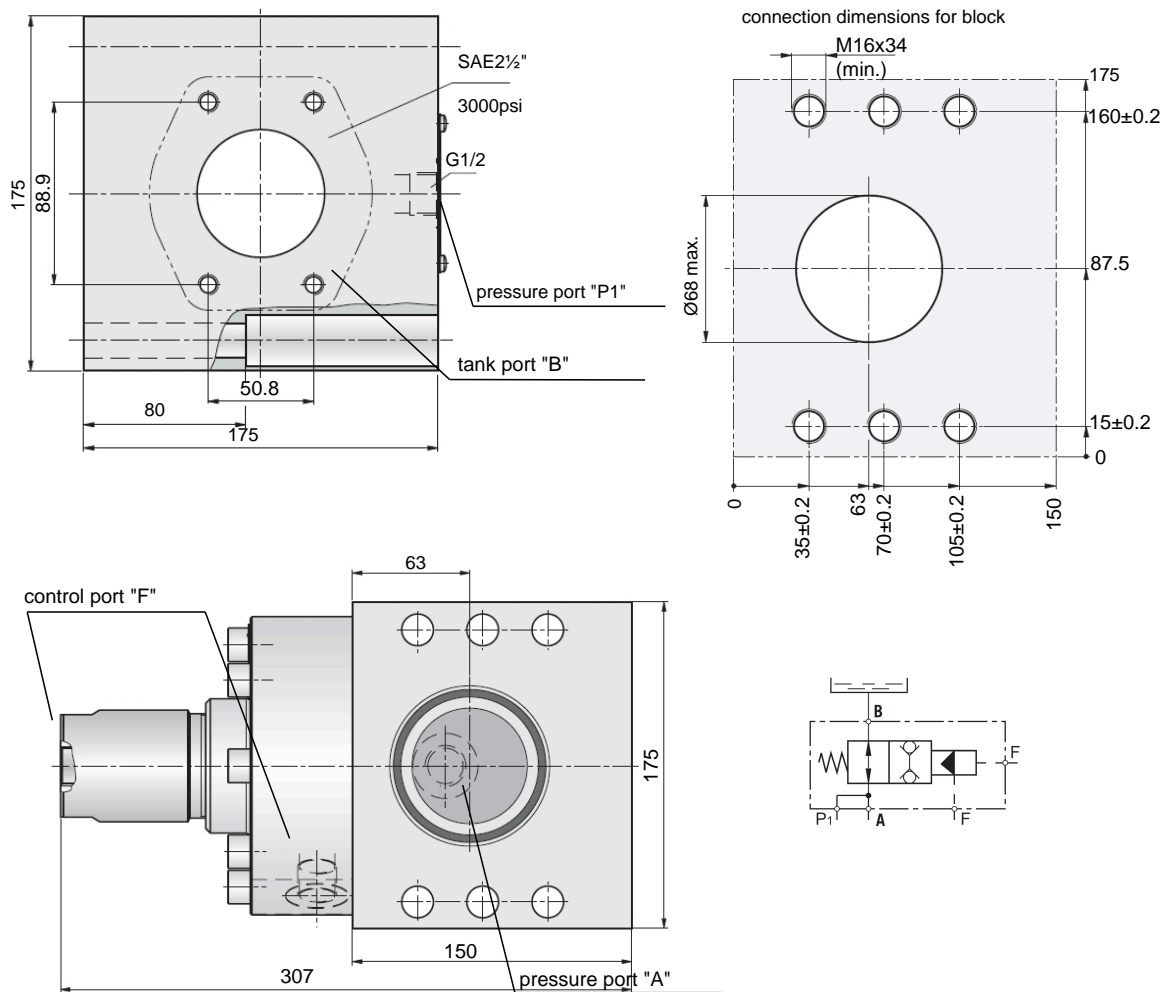
Minimum screw length for fixing: 120 mm. Recommended are screws of property class 10.9 (110^{+2} Nm), others on request.

NG75 - In-cylinder application



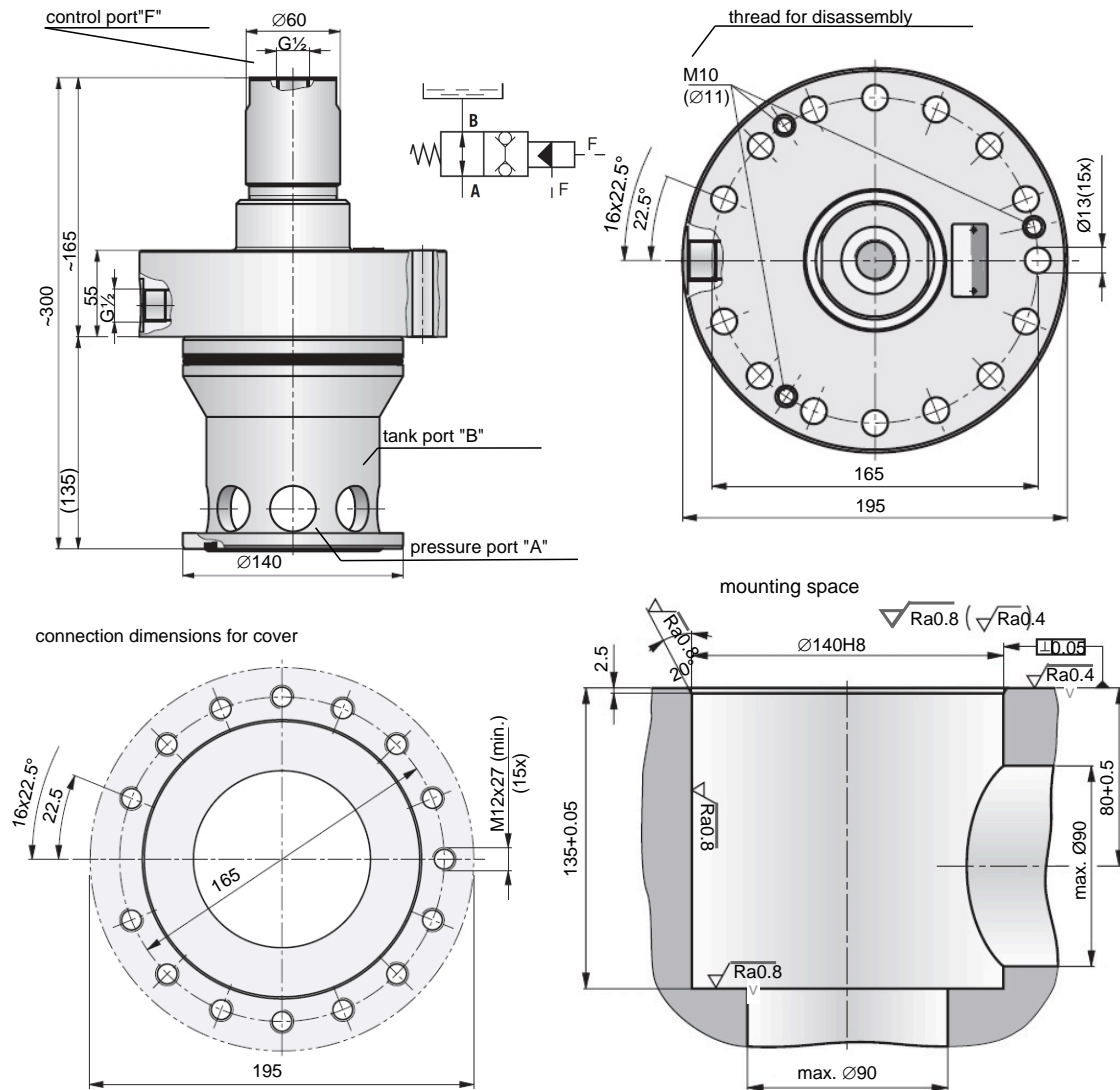
Minimum screw length for fixing: 80 mm. Recommended are screws of property class 10.9 (110⁺²Nm), others on request.

NG75 - On-cylinder application



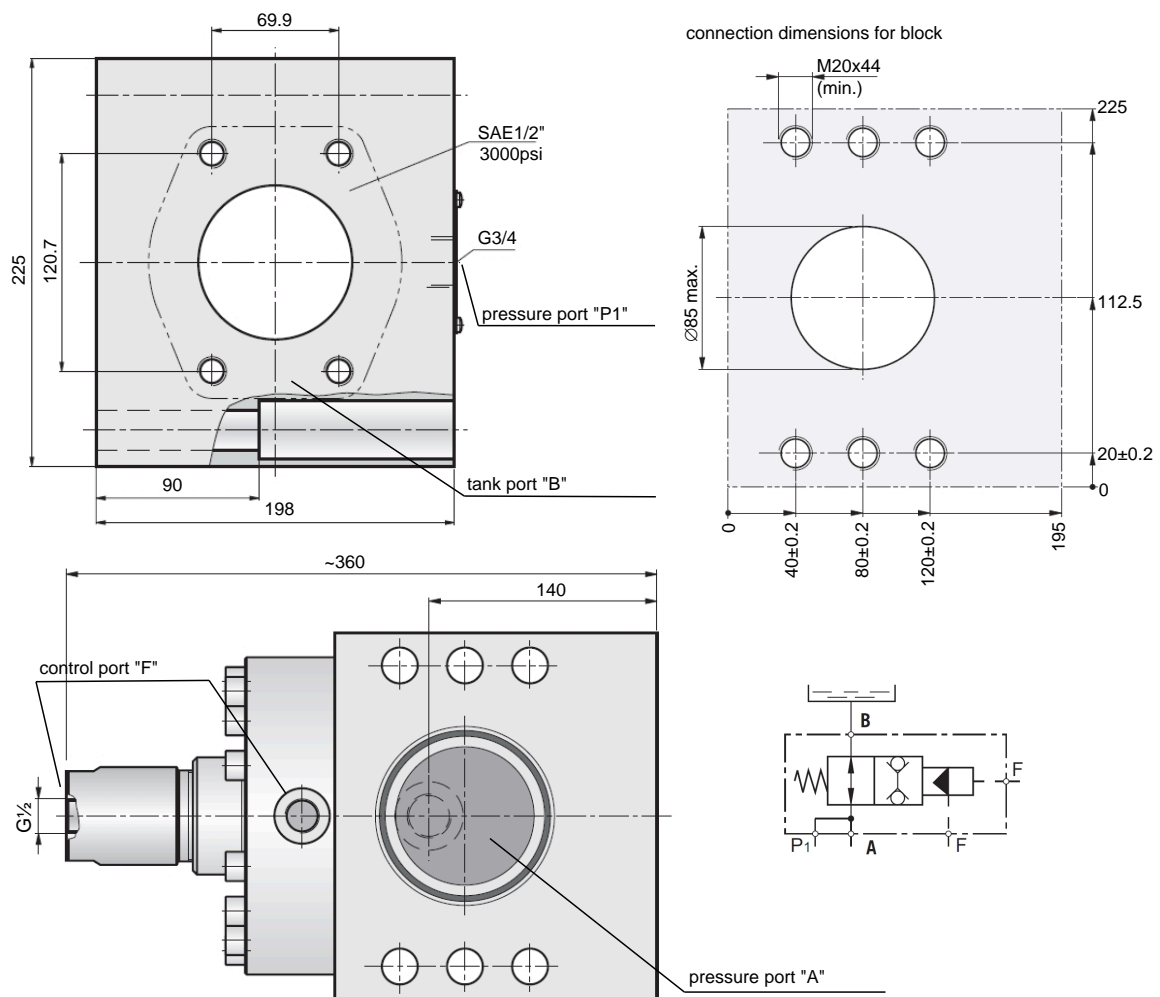
Minimum screw length for fixing: 110 mm. Recommended are screws of property class 10.9 (270⁺² Nm), others on request.

NG100 - In-cylinder application



Minimum screw length for fixing: 80 mm. Recommended are screws of property class 10.9 (110 +2 Nm), others on request.

NG100 - On-cylinder application



Minimum screw length for fixing: 130 mm. Recommended are screws of property class 10.9 (540^{+2} Nm), others on request.

Order information

Type code

NSV	050	BE	05	L	
					sealing — with sealing, leakage free
					L without sealing, with drain flow
					port size 03 32
					05 50 size
					07 75
					10 100
					fixation BE cylinder installation
					BA flanged on cylinder
					design 050 pressure port B suction port A
					060 pressure port A suction port B
					type anti-cavitation valve

Contact details

Headquarters

HAWE Hydraulik SE
Einsteinring 17
85605 Aschheim
Germany

e-mail: info@hawe.de
www.hawe.com

Telefon: +49 (0) 89 / 37 91 00 - 1000

Contact to the Customer Service

Phone (Head office)	+ 49 (0) 89 / 37 91 00 - 1000
Phone (Spare parts service)	+ 49 (0) 89 / 37 91 00 - 1302
Phone (Customer Service)	+ 49 (0) 89 / 37 91 00 - 1491
Fax (Customer Service)	+ 49 (0) 89 / 37 91 00 - 91491
e-Mail	spareparts@hawe.de service@hawe.de