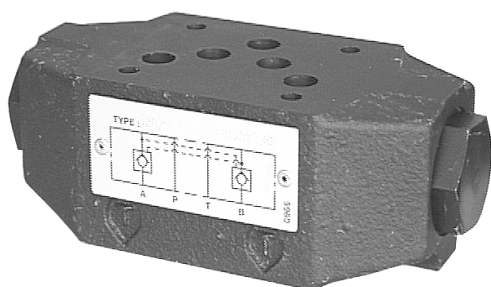


# Intermediate plates with pilot-operated double check valve type GRV (size 10)

operating pressure  $p_{\max}$  250 bar  
volume flow  $V_{\max}$  80 L/min



## Product characteristics

Check valves belong to the group of stop valves. They block the oil flow in one direction while enabling it in the other direction. When closed, they are leakage-free tight.

The hydraulically unlockable double check valve type GRV blocks the flow of the hydraulic fluid in one or both directions.

### Features and benefits:

- simple acting or double acting
- check valve in line A, in line B or in line A and B
- adapted for mounting on hydraulic power units type H6

## Table of Contents

Technical data.....	2
Characteristic lines.....	3
Dimensions and connections.....	4
Order information.....	5

## Technical data

### General

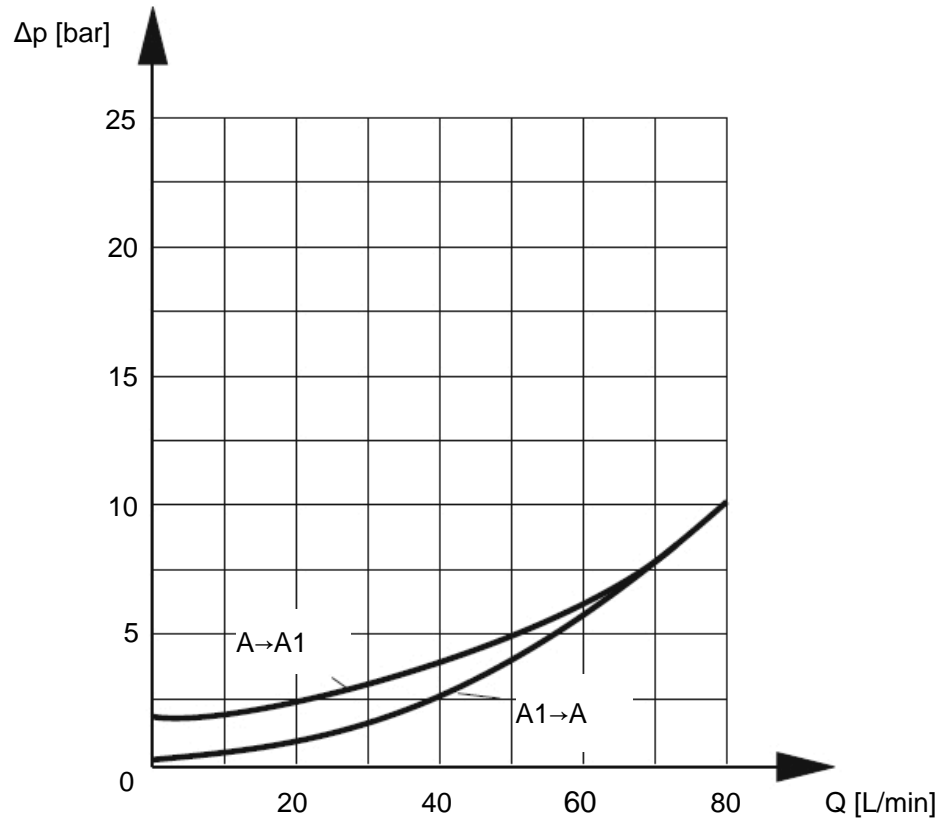
type	seated valve
design	intermediate plate valve
weight	2.7 kg
ambient temperature	-30 to +50 °C
mounting position	arbitrary
connection size	ISO 4401-05-04-0-05 (NG10)

### Hydraulic parameters

max. operating pressure	250 bar
max. volume flow	80 L/min
hydraulic fluid temperature	-25 to +70 °C
viscosity	10-600 mm <sup>2</sup> /s
permissible degree of pollution	max. class 22/19/16 according ISO 4406
filter recommendation	filter retention rate $\beta_{25} > 75$
progression ratio	1 : 14,3
opening pressure	min. 1 bar

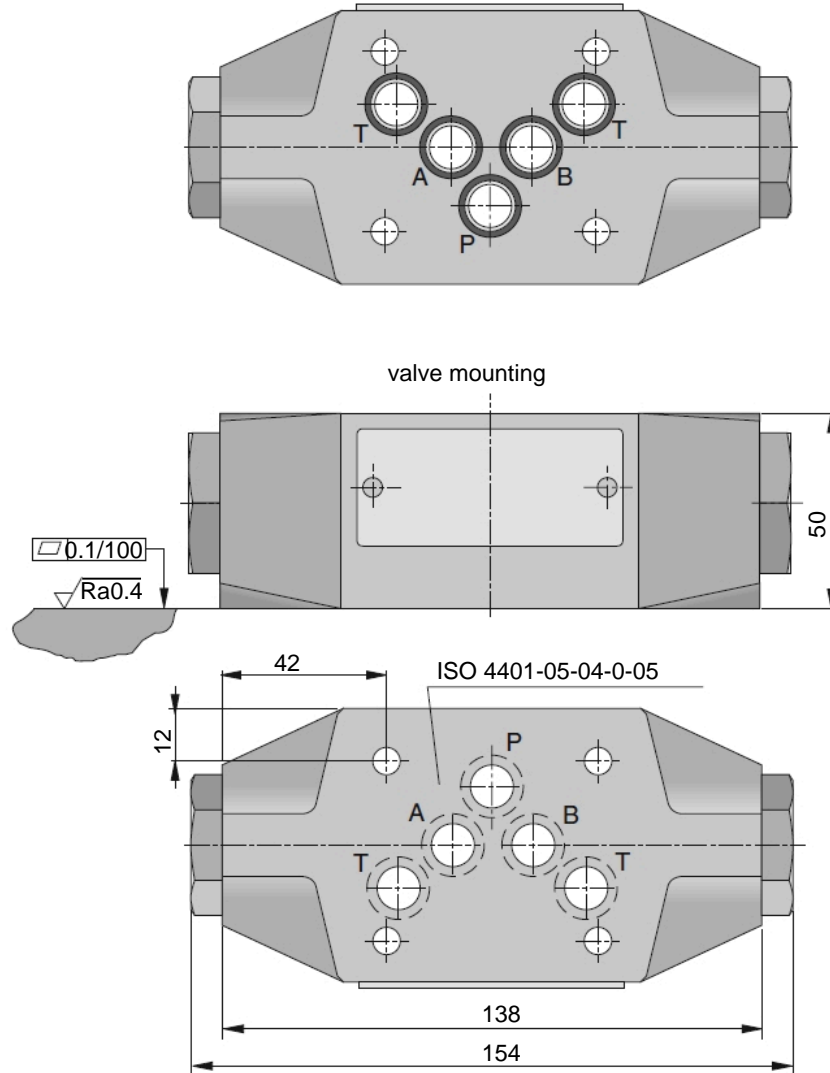
## Characteristic lines

measured at +50 °C temperature of hydraulic fluid, viscosity 35 mm<sup>2</sup>/s, tolerance ±5 %



## Dimensions and connections

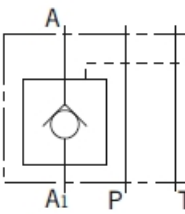
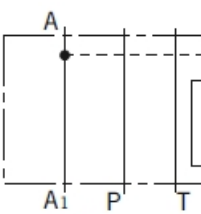
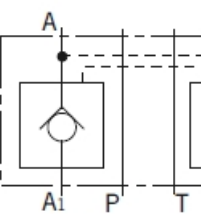
Dimensions are given in mm.



4 O-rings 8.7 x 1.78 are included in the delivery.

## Order information

### Type code

GRV	2	ZP10	N	C
			<b>control in line</b>	<p>A check valve in line A</p>  <p>B check valve in line B</p>  <p>C check valve in line A and B</p> 
			<b>design</b>	N standard type
			<b>size</b>	10
			<b>number of check valves</b>	<p>1 single acting (only type A or B)</p> <p>2 double acting (only type C)</p>
<b>type</b>	pilot-operated double check valve			

**HAWE Hydraulik SE**

Einsteinring 17 | 85609 Aschheim/München | Postfach 11 55 | 85605 Aschheim |  
Germany Tel +49 89 379100-1000 | Fax +49 89 379100-91000 | [info@hawe.de](mailto:info@hawe.de) | [www.hawe.com](http://www.hawe.com)